

SRP HIGH-TECH INTERCONNECT PROJECT (HIP) ROUTE TOUR DIRECTIONS

Hilton Phoenix/Chandler -- Starting Point

From the Hilton Phoenix/Chandler Hotel (2929 West Frye Road, Chandler, AZ 85224), turn left onto Frye Road and travel west for 850 feet. Turn left onto Price Road and travel south for 0.5 miles until the stop lights at the Loop 202 East on-ramp. Turn left onto the Loop 202 eastbound and travel for approximately 3.0 miles. Take the Arizona Avenue exit and turn right onto Arizona Avenue and travel for approximately 2.7 miles to Ocotillo Road. Turn left onto Ocotillo Road and travel for 0.4 miles, cross the railroad tracks, then turn right onto Pinelake Way. Travel south on Pinelake Way for 0.2 miles towards the Schrader Substation.

Schrader Overhead Transition Corridor

1 **Observation Point 1:** Pull off of Pinelake Way, on graded dirt road west of the Schrader Substation, between the Schrader Substation and the vacant SRP owned parcel. ***Get out at this point in the vacant lot and can see location of route options.***

Then head north on Pinelake Way 0.2 miles, turn left onto Ocotillo Road and travel west for approximately 0.4 miles. Turn left onto Arizona Avenue and travel south for approximately 1.0 mile. Turn right onto Chandler Heights Road and continue west for 1.4 miles. Turn right onto Alma School Road and travel north for approximately 0.6 miles. Turn left onto Lake Drive and travel west for approximately 0.3 miles. Turn left and travel west on Chaparral Way for approximately 0.4 miles until Dobson Road. Turn right onto Dobson Road and continue north for approximately 0.5 miles to Ocotillo Road. Turn left into Intel's campus at Ocotillo Road.

2 **Observation Point 2:** Pull into the parking lot. ***From the entrance of Intel look to the southwest and can see Intel's campus.***

Then head north on Dobson Road for approximately 1.5 miles and turn left on Queen Creek Road. Continue west on Queen Creek Road for approximately 0.7 miles to Old Price Road. Turn left onto Old Price Road and continue south for approximately 2.0 miles.

Existing Henshaw Substation to Intel and RS-28

3 **Observation Point 3:** At the intersection of Gila River Indian Community (GRIC) boundary and Old Price Road. ***The overhead line will follow the existing transmission line to the north and transition to underground approximately 800 feet south of this point. RS-28 is located to the east on Intel's Campus.***

Turn around and go back to the north along Old Price Road for approximately 1.75 miles to the intersection of Queen Creek Road. ***The overhead line will follow the existing transmission line.***

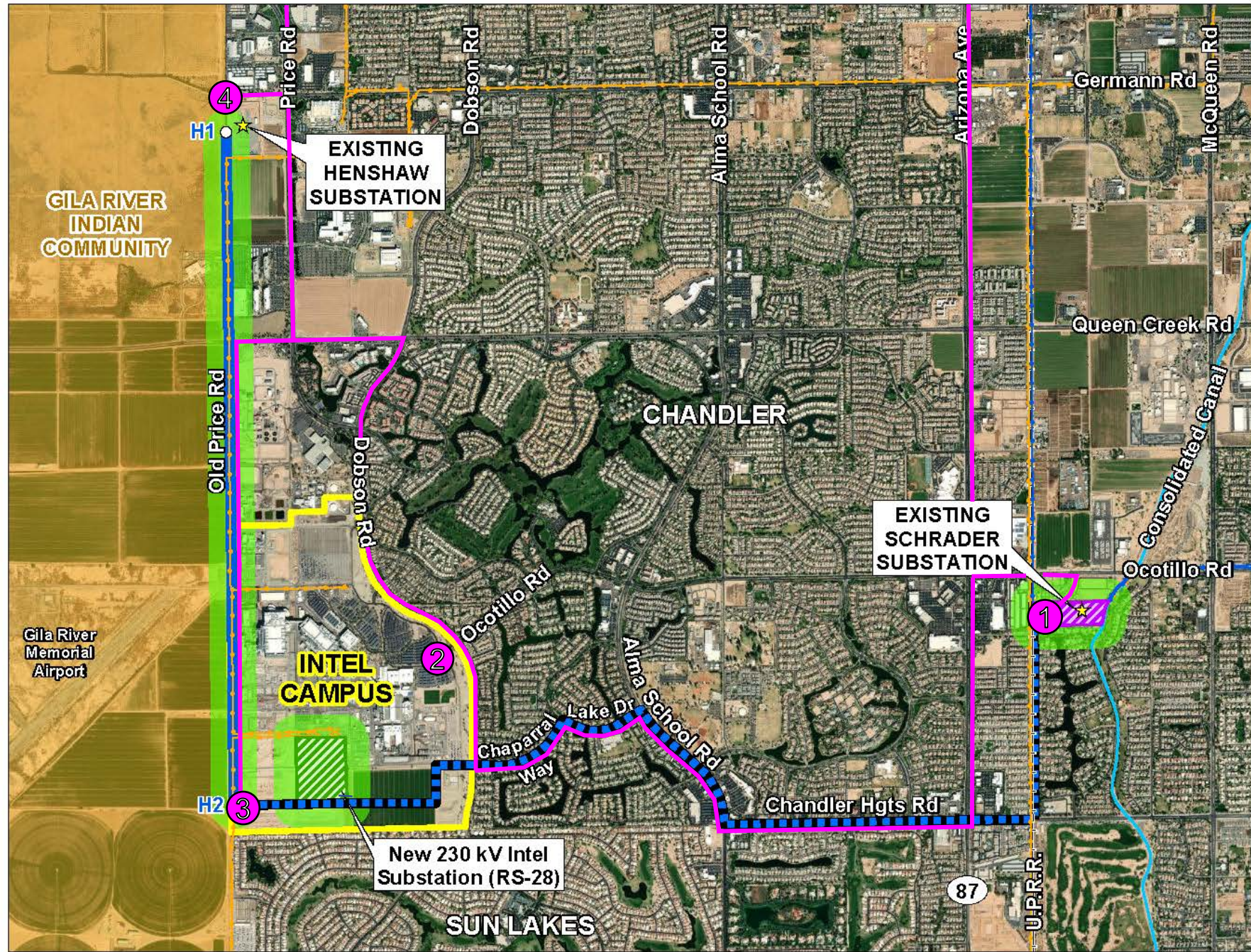
Turn right onto Queen Creek Road and travel east for approximately 0.25 miles to Price Road. Turn left onto Price Road and travel north approximately 1.0 mile to Germann Road. At Germann Road turn left and travel west for approximately 0.25 miles to the end of the road.

4 **Observation Point 4:** Pull off the road safely. ***You are at the northwest corner of Henshaw Substation. The overhead line will exit the substation and follow the transmission line south towards Intel's Campus.***

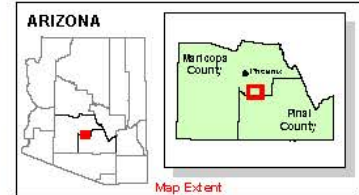
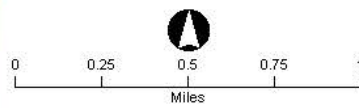
To Return to the Hilton Phoenix/Chandler

Turn around and head east on Germann Road for 0.25 miles to Price Road. Turn left onto Price Road and travel north for approximately 1.6 miles to Frye Road. Turn right onto Frye Road and the hotel is on your right.





- Legend**
- ① Stop
 - Project Components**
 - Node (Origin or Terminus)
 - ★ Existing Substation
 - Overhead Route
 - Schrader Overhead Transition Corridor
 - Underground Route
 - ▨ New 230 kV Intel Substation (RS-28)
 - Overhead Components
 - General Features**
 - Existing 230 kV
 - Existing 69 kV
 - Railroad
 - Canal
 - ▭ Intel Campus
 - ▭ Gila River Indian Community



SRP
HIGH-TECH INTERCONNECT PROJECT (HIP)
ROUTE TOUR

Map Extent: Maricopa County, AZ
Date: 10.27.21